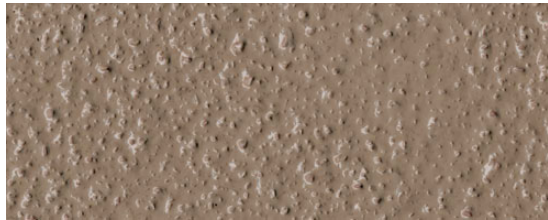


GacoDeck®

SLIP-RESISTANT TEXTURE GRANULE FINISH

(ACTUAL PRODUCT SAMPLE SHOWN IN ADOBE)



OYSTER



DESERT



PEWTER



SHALE



ADOBE



SEDONA

(COLORS MAY VARY SLIGHTLY DUE TO
SURFACE TEXTURE, APPLICATION TECHNIQUE
AND LIGHTING CONDITIONS)

IF YOU'VE EVER SAID
TO YOURSELF
"THERE MUST BE
AN EASIER WAY TO
WATERPROOF MY DECK..."
YOU JUST FOUND IT!

GacoDeck Kit includes the necessary supplies for waterproofing your deck. There's no need to hunt for polyester tape, a paintbrush, or the right roller.

Your supplies are all neatly packaged inside the GacoDeck Kit bucket, along with a how-to DVD and complete step-by-step instructions.



Contact your local retailer or logon
for a FREE DVD!

- Need help? Call us 7 days a week
- 7am to 7pm PST
- Expert customer service staff
- Call toll free from the store or at home

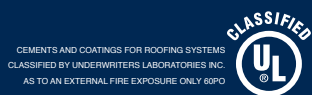


WWW.GACORETAIL.COM
GACO HELPLINE: (866) 422-6489



THE EASY WATERPROOFING FOR YOUR DECK.

- 50-year limited warranty
- Do it yourself in a day
- Turn your flat roof into a deck
- Skid resistant
- Everything you need is included



* See product packaging for warranty details

08/08 (10,000)

GacoDeck®

THE EASY WATERPROOFING FOR YOUR DECK.

WHAT CAN I DO WITH GACODECK?

GacoDeck allows homeowners to apply a high quality waterproof deck system over plywood, concrete, metal, fiberglass, and painted surfaces. The GacoDeck system provides lasting surface protection and waterproofing, plus a skid resistant surface that cleans up easily. One GacoDeck Kit will cover 100 square feet.

Unlike other do-it-yourself deck systems, the GacoDeck system waterproofs rooftop decks over occupied living space. GacoDeck is the same top-quality, durable acrylic coating used by decking professionals.

GacoDeck's unique acrylic polymer coating can be applied over plywood, concrete, metal, fiberglass, and painted surfaces (metal and fiberglass surfaces require a primer).

Gaco Deck creates a fully adhered, durable waterproof membrane which expands and contracts along with your substrate.

GacoDeck is perfect in hot or cold climates, because this high-quality acrylic coating does not soften in the heat or become brittle from cold.

APPLY YOUR GACODECK IN A DAY!

Complete step-by-step instructions for applying GacoDeck are found inside this brochure and in the GacoDeck Kit. By following these instructions for preparation and application, your waterproof deck can be finished in a day! Properly applied and maintained, GacoDeck will waterproof and protect your deck for years. Clean your deck annually with GacoWash concentrated cleaner.

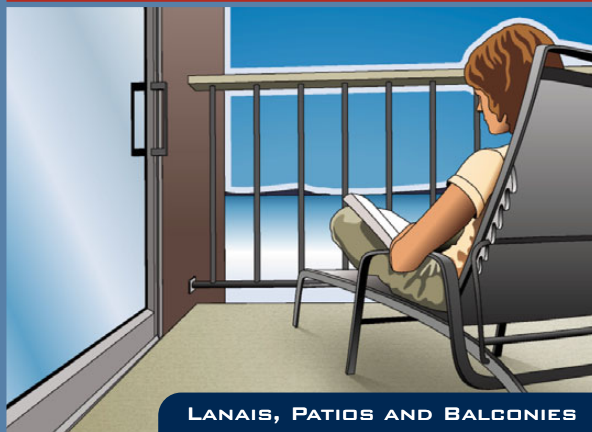
RAMPS, STAIRS, & MORE

GacoDeck coating will also provide an attractive, skid-resistant surface on platforms such as decks, boat docks, and stair treads, or on wheel chair ramps and walkways. For these applications, GacoDeck functions as a durable, easy to clean surface. See instructions for details.

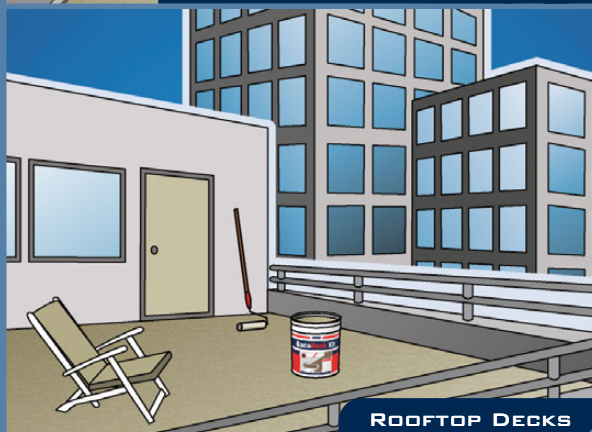
GacoDeck coating meets the recommended standards for accessible routes set forth by the Americans with Disabilities Act.



GACODECK ADHERES TO A VARIETY OF DECK SURFACES



LANAIS, PATIOS AND BALCONIES



ROOFTOP DECKS

ABOUT GACO WESTERN

Gaco Western has manufactured high-quality waterproofing systems for more than 50 years. The GacoDeck waterproofing system is the same top-quality elastomeric coating used by professional decking contractors.

WITH GACODECK, YOU GET IT ALL!

With the GacoDeck Kit, there's no need to hunt for polyester tape, brushes or rollers. It's all neatly packaged inside! To make the application go smoothly, the GacoDeck Kit includes step-by-step instructions, and a DVD demonstration of a GacoDeck application from start to finish. After your project is completed, clean up is easy — GacoDeck cleans up with just soap and water.

THE GACODECK KIT INCLUDES EVERYTHING YOU NEED TO GET STARTED:

- Instructions
- One 3/8" nap roller cover
- 1.5 pounds of GacoGrip texture granules
- One roll 4"x120' polyester tape
- One 3" paint brush
- One DVD with detailed instructions
- 3.5 Gallons of GacoDeck Coating



You may also require the following items which are not included in the GacoDeck Kit:

- 9" roller frame
- Paddle for stirring
- High-quality, paintable acrylic caulk
- Masking tape
- Rags for clean-up
- Exterior primer
- Scissors



Product available in smaller sizes for smaller projects



GacoDeck®

APPLICATION INSTRUCTIONS

Previously Coated Surfaces

Clean surface by pressure washing or thorough scrubbing with GacoWash concentrated cleaner and water. If applicable, prepare all cracks and seams following "Caulking, Taping & Flashing" directions listed below. Prime surface with GacoDeck Primer at the rate of 1 gallon per 200 square feet over entire surface before applying first top coat. If surface is previously painted and has a high gloss finish, lightly sanding the surface is recommended before applying GacoDeck primer.

Plywood

If you are coating a new plywood deck, please start with the "Caulking, Taping & Flashing" section below. No primer is required for standard or pressure treated plywood applications. If it is a previously coated plywood deck please see "Previously Coated Surfaces" above. Do not use unsuitable grades and GacoDeck Kit is NOT recommended for Teak, Cedar or Redwood.

Concrete

Concrete surfaces to receive GacoDeck coating must be structural concrete which is properly ventilated. "On Grade" concrete slabs must be poured over minimum 4" pea gravel base or equivalent. Concrete must cure and dry four weeks before GacoDeck application. Concrete surface should be smooth and free from rock pockets or voids without being burnished. Etching of concrete is not normally required. If concrete surface shows evidence of dusting or chalk, then etch surface prior to coating application as follows: Apply diluted muriatic acid (3 parts water/1 part muriatic acid) at a rate of 75 square feet per quart following label directions and precautions. Allow the etching solution to work for 2-3 minutes. Scrub with stiff brush and flush with clean water to rinse from surface. Allow to dry (no rain or moisture) for at least 2 full days.

Metal & Fiberglass

Metal surfaces must be primed. Lightly sand surface and prime with exterior metal primer.

Fiberglass must be dry and clean. Lightly sand. Treat seams, splits, cracks and breaks as you would plywood joints.

Caulking, Taping and Flashing

Apply high-quality 50-year, water-resistant, paintable acrylic caulking to all joints and cracks. (Use only Acrylic Caulking.) Apply caulking according

to manufacturer recommendations. Smooth the caulk flush with deck surface. If caulking is allowed to dry more than 24 hours, wipe with a damp cloth prior to application. Joints, cracks and changes of plane must be taped (For details, see Figures 1, 2, and 3). To begin taping, brush a 5-6" wide stripe of GacoDeck coating, centering the stripe over joints or cracks. Work in small sections, since latex coatings dry quickly. While the coating is still wet, embed polyester tape smoothly into the coating. Brush another layer of coating over the tape, smoothing out any wrinkles. Allow the surface to dry. For a seamless finish, lightly sand the edges of the coated tape with medium grit sandpaper before applying the first coat.

All flashing must be flush with surface. If installing flashing nail or screw every six inches. Care should be taken to not buckle the flashing during installation. Prime all metal flashing with appropriate exterior metal primer. All flashing must be taped following the directions above.

If the GacoDeck coating will terminate where there is no natural break, use masking tape to create a clean, sharp edge.

First Base Coat

Apply uniform coat of GacoDeck, using 3/4 gallon per 100 square feet over entire surface, including taped or flashed areas. Unlike paint, apply a heavy coat in order to create the waterproof elastomeric membrane. Allow surface to dry until it can be walked on, 2-4 hours in ideal conditions. While the first coat dries, wrap the roller cover in aluminum foil or plastic.

Second Base Coat

Apply another uniform coat of GacoDeck, using 3/4 gallon per 100 square feet over entire deck surface, including taped or flashed areas. Allow the surface to dry until it can be walked on, 2-4 hours in ideal conditions. While the second coat dries, wrap the roller cover in aluminum foil or plastic.

Top Coats

GacoGrip texture granules create a decorative and slip-resistant finish for your deck. Add all of the GacoGrip granules to the remaining coating. Stir thoroughly. After adding texture, apply two topcoats at 3/4 gallon per 100 square feet per coat. Best results are achieved by applying texture coats in parallel overlapping roller passes, either North-South or East-West. Allow the first coat to dry before applying the final coat. If you must wait more than 72 hours between coats, wash the surface with detergent, rinse well and allow to dry completely. GacoDeck must be applied at the proper rate (100 square feet) per kit to ensure proper coating thickness. Failure to do so voids the warranty and may result in the products failure to provide a waterproof membrane.

Special Circumstances

During hot weather (above 90°) apply coating in morning or evening. Do not apply at temperatures below 50°, or when temperature will fall below 50° within 6 hours. Wait two or more days before using deck or placing heavy objects on surface.

In extremely cold climates (10-15° over three month period), GacoDeck Primer must be used in conjunction with GacoDeck. If GacoDeck Primer is not used with GacoDeck, your deck could experience surface cracks. There are two modifications to the instructions above for extreme cold weather climates. First, all taping and flashing details must utilize GacoDeck Primer instead of GacoDeck coating. Second, apply one coat of GacoDeck Primer at rate of 1 gallon per 200 square feet over entire surface prior to the first base coat. After primer is dry, you can follow normal GacoDeck instructions starting with "First Base Coat."

GACO DECK KIT 50-YEAR LIMITED WARRANTY

Gaco Western warrants that the GacoDeck Top Coat elastomeric coating will last 50 years on the surface it is applied to, subject to strict adherence to Gaco Western's application instructions, and subject to recoat procedures for normal wear and tear. This warranty is limited to GacoDeck Top Coat elastomeric coating only. If GacoDeck Top Coat elastomeric coating does not meet the warranted standard, Gaco Western will replace elastomeric coating included in GacoDeck Top Coat at no cost to purchaser. Proof of purchase required. WARRANTY SPECIFICALLY EXCLUDES ALL LABOR OR COSTS OF LABOR, and ALL INCIDENTAL OR CONSEQUENTIAL DAMAGES OF ANY KIND. The GacoDeck Top Coat limited warranty excludes abuse of installed deck coating in any way, including, but not limited to non-pedestrian traffic, burns, chemicals, spiked shoes, sharp or abrasive objects, excessive weight, roots and planters set directly on deck surface, or submersion for more than 30 days. This warranty is void if GacoDeck elastomeric coating is painted or covered over with any product except GacoDeck Top Coat. This 50-year limited warranty is not transferable to successive property owners. Gaco Western has no control over the variables involved during application of a GacoDeck Top Coat. Therefore, Gaco Western cannot guarantee results of the application, including, but not limited to, appearance, watertight capabilities, slip-resistance, or suitability of the surface GacoDeck Top Coat is applied to. Gaco Western offers no other express or implied warranties.

This warranty gives you specific legal rights; you may have other rights, which vary from state to state. Some states do not allow exclusion of incidental or consequential damages, so limitations or exclusions contained above may not apply. To make a warranty claim, call Gaco Western at 1-866-422-6489.

DECK CONSTRUCTION AND PRELIMINARY PREPARATION

Your GacoDeck Kit will only be successful if you follow construction and deck surface instructions below.

Plywood

Grades: Plywood should carry the trademark of the American Plywood Association. Grades "Exterior/APA A/C Group I" and "Exterior/APA B/C Group I" are suitable, as well as "Marine" grade plywood. Unsuitable grades are interior grade plywood with or without exterior glue, and underlayment grade plywood, such as "C/C Exterior," OSB, Waferboard and Exposure I markings. Do not use unsuitable grades and GacoDeck Kit is NOT recommended for Teak, Cedar or Redwood.

Installation

All panel edges, except tongue and groove plywood, should be supported on blocking or primary framing. Plywood should be continuous across supports with all edges in moderate contact. Plywood joints should be tight, level, and smooth.

Thickness of plywood and spans should meet the following minimums:

- 1/2" for plank or other solid substrates only
- 5/8" for supports 16" OC
- 3/4" for supports 24" OC
- 1-1/8" for supports 48" OC

Stagger joints when installing plywood over sheathed or dimensional (planked) decks.

Repairs to Plywood

Plastic wood patch materials may be used to repair damaged plywood. Sanding before taping, especially at the joints, will improve the final appearance of the deck.

The deck should be sloped so as to freely drain, preferably to a drain or gutter (see Figure 4). One-quarter inch slope per foot is recommended. Slope is a function of structural design, and the GacoDeck Kit cannot be used to provide such a slope where it does not already exist. A deck that lacks adequate slope may experience leaks at low thresholds, standing puddles, or surface stains from ponded water and debris. Avoid soiling the fascia by incorporating a gutter or drain into your design. Insert drain flush with plywood. Install a positive drip so that drainage is outside the fascia.

Ventilation

Good design requires that adequate ventilation be provided for the deck structure. Allow a minimum of 1" air space between the bottom of the deck and any thermal insulation.

Nailing

Use non-rusting screws, non-rusting ring shank nails, or hot-dipped galvanized box nails only. The nails should be 6D for 3/4" or less plywood, 8D for 7/8" or more, and 10D for 1-1/8" plywood. Space fasteners 6" on center, along panel edges, and 12" on center in all directions in the field. Drive nails flush without indenting plywood.

For additional information go to www.gacodeckkit.com and check the Frequently Asked Questions (FAQ) page.

FIG. 1:
Perimeter Detail

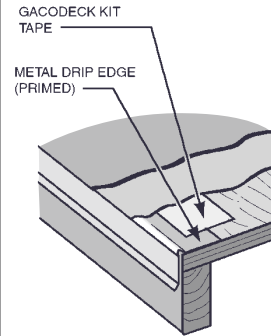


FIG. 2:
Joint Detail

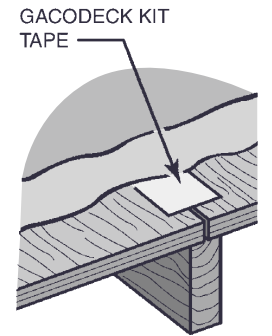


FIG. 3:
Change of Plane Detail

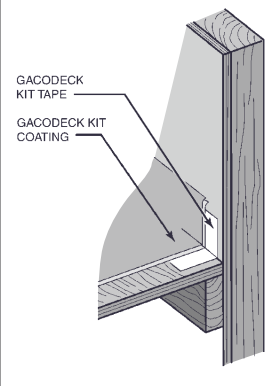


FIG. 4:
Plywood Drain Detail

